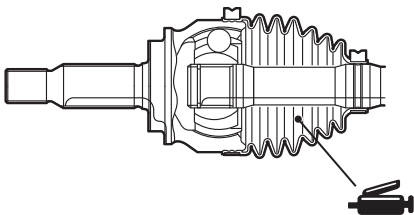
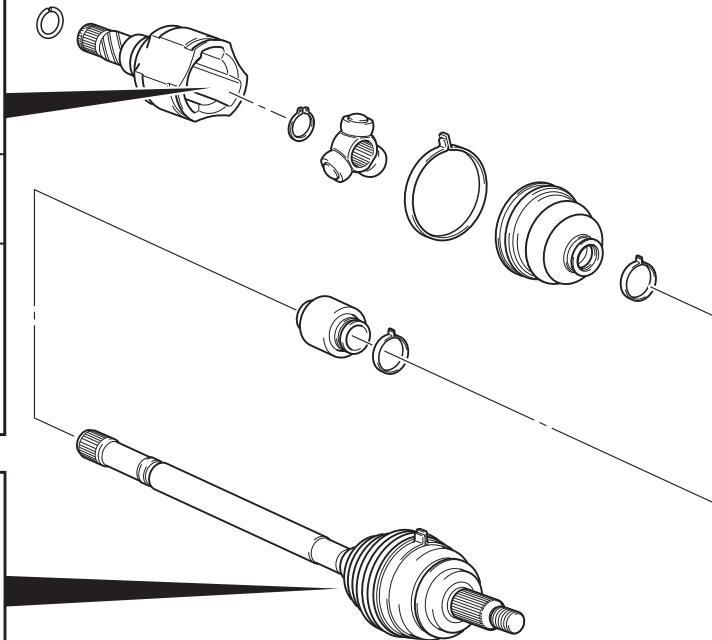


**Grease: Repair kit grease**  
**Amount used: 75 ± 10 g**

**⚠ CAUTION**

The drive shaft joint uses special grease.  
Do not mix old and new or different types of grease.



**Grease: Repair kit grease**  
**Amount used: 65 ± 10 g <EBJ>, 70 ± 10 g <VUJ>**

**⚠ CAUTION**

The drive shaft joint uses special grease.  
Do not mix old and new or different types of grease.