

Denotes tightening torque.  
For bolts and nuts which do not have a tightening torque listed, refer to the "Standard Parts tightening-torque Table"

Indicates the section title.

Indicates the group title.

Indicates the group number.

BASIC BRAKE SYSTEM  
FRONT DISC BRAKE ASSEMBLY

35A-19

Indicates the page number.

## FRONT DISC BRAKE ASSEMBLY

### REMOVAL AND INSTALLATION

M1351006000366

#### Pre-removal Operation

- Brake Fluid Draining

#### Post-installation Operation

- Brake Fluid Supplying and Air Bleeding (Refer to .)

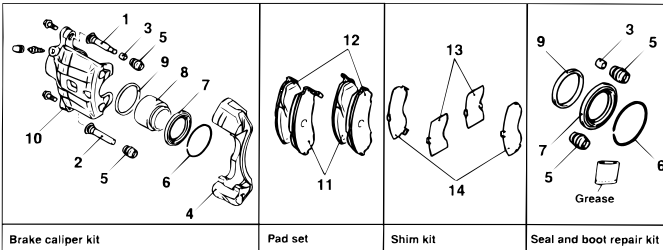
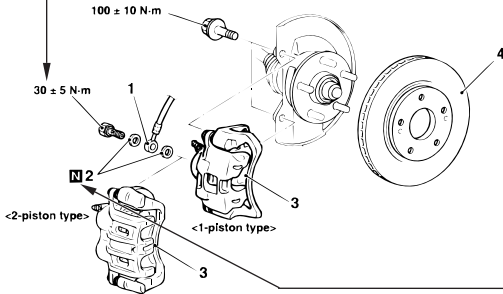
Indicates procedures to be performed before the work in that section is started, and procedures to be performed after the work in that section is finished.

### Component diagram

A diagram of the component parts is provided near the front of each section in order to give the reader a better understanding of the installed condition of component parts.

Mark **N** denotes nonreusable part.

Repair kit or parts sets are shown.  
(Only very frequently used parts are shown.)



- Removal steps**
- >>A<< 1. Brake hose connection  
2. Gasket
- >>B<< 3. Brake caliper assembly  
4. Brake disc

## Maintenance and servicing procedures

The numbers provided within the diagram indicate the sequence for maintenance and servicing procedures.

### ● Removal steps :

The part designation number corresponds to the number in the illustration to indicate removal steps.

### ● Disassembly steps :

The part designation number corresponds to the number in the illustration to indicate disassembly steps.

### ● Installation steps :

Specified in case installation is impossible in reverse order of removal steps. Omitted if installation is possible in reverse order of removal steps.

### ● Reassembly steps :

Specified in case installation is impossible in reverse order of removal steps. Omitted if reassembly is possible in reverse order of disassembly steps.