

Classifications of major maintenance / service points

When there are major points relative to maintenance and servicing procedures (such as essential maintenance and service points, maintenance and service standard values, information regarding the use of special tools, etc.). These are arranged together as major maintenance and service points and explained in detail.

<<A>> : Indicates that there are essential points for removal or disassembly.

>>A<< : Indicates that there are essential points for installation or reassembly.

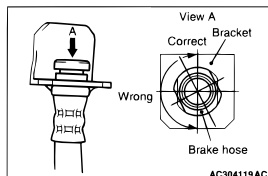
BASIC BRAKE SYSTEM FRONT DISC BRAKE ASSEMBLY

35A-21

INSTALLATION SERVICE POINTS

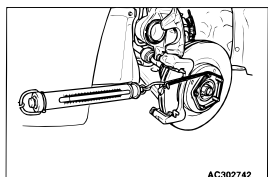
>>A<< BRAKE HOSE INSTALLATION

1. Install the brake hose end on the bracket and another end on the front brake assembly.



2. Twist the brake hose towards the lesser torsion between the brake hose and bracket as shown and secure it to the bracket.

>>B<< BRAKE CALIPER ASSEMBLY INSTALLATION



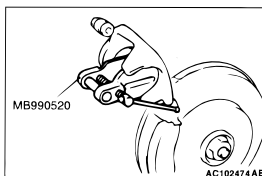
1. In order to measure the brake drag torque, measure the hub torque with the pads removed by the following procedure.

- (1) Use a spring balance to measure the hub torque in the forward direction.
- (2) Record hub torque with pads removed.

CAUTION

Do not let any oil, grease or other contamination get onto the friction surfaces of the pads and brake discs.

2. After re-installing the caliper support to the knuckle, install the pad clips and the pads to the caliper support.

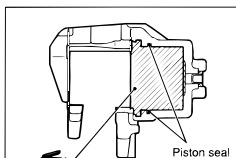


3. Clean the piston and insert into cylinder with special tool disc brake piston expander (MB990520).
4. Install the pad clips and the pads to the caliper support and tighten the pin bolt to the specified torque.

Tightening torque : 38 ± 4 N·m

Operating procedures, cautions, etc. on removal, installation, disassembly and reassembly are described

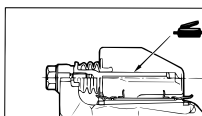
LUBRICATION POINTS



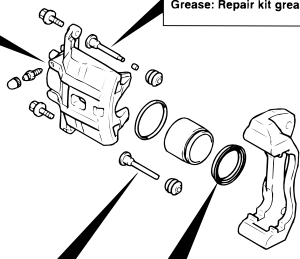
CAUTION

The piston seal inside the caliper seal kit is coated with a special grease. Do not wipe this grease off.

Brake fluid: DOT 3 or DOT 4



Grease: Repair kit grease



The title of the page (following the page on which the diagram of component parts is presented) indicating the locations of lubrication and sealing procedures.

Indicates (by symbols) where lubrication is necessary.

Symbols for lubrication, sealants and adhesives

Symbols are used to show the locations for lubrication and for application of sealants and adhesives.

These symbols are included in the diagram of component parts or on the page following the component parts page. The symbols do not always have accompanying text to support that symbol.



: Grease

(Multi-purpose grease unless there is a brand or type specified)



: Sealant or adhesive



: Automatic transmission fluid, brake fluid, power steering fluid or air conditioning compressor oil



: Engine oil or gear oil



: Adhesive tape or butyl rubber tape