
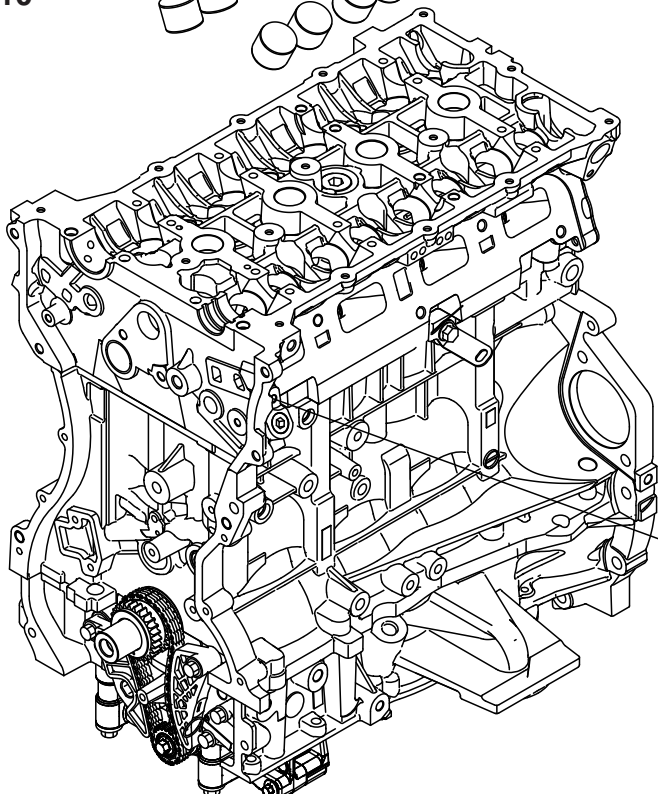
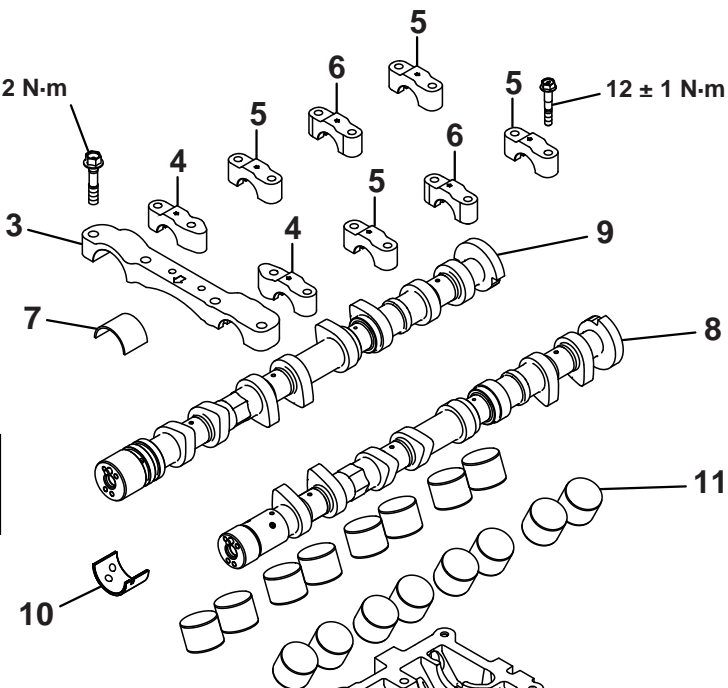


$17 \pm 3 \text{ N}\cdot\text{m}$ then $30 \pm 2 \text{ N}\cdot\text{m}$

$12 \pm 1 \text{ N}\cdot\text{m}$

 Apply engine oil to all moving parts before installation.



$2 \text{ N}\cdot\text{m}$

$10 \pm 2 \text{ N}\cdot\text{m}$