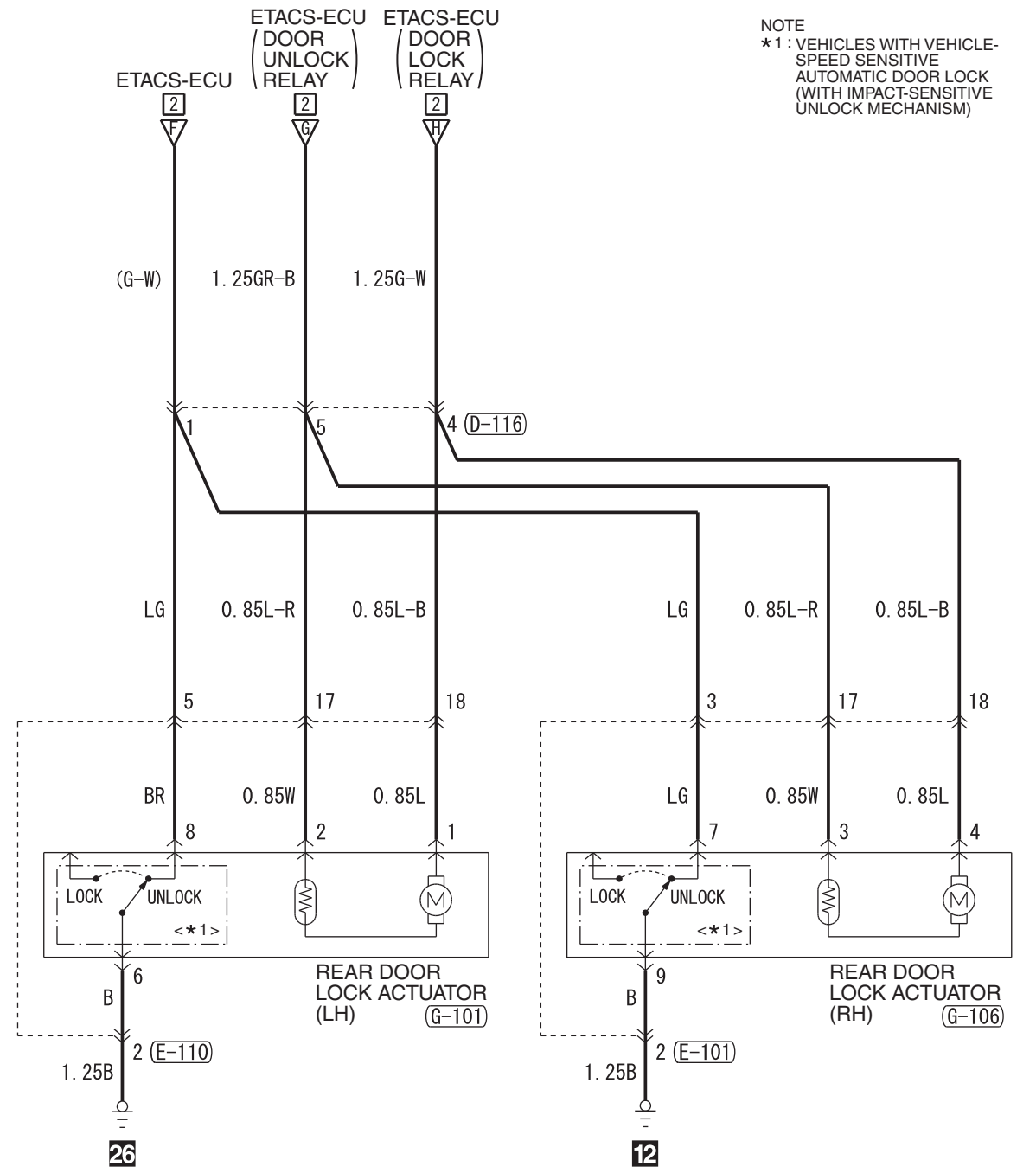
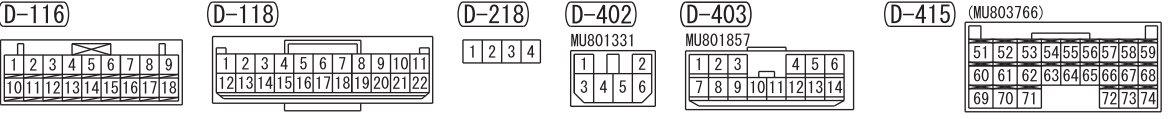
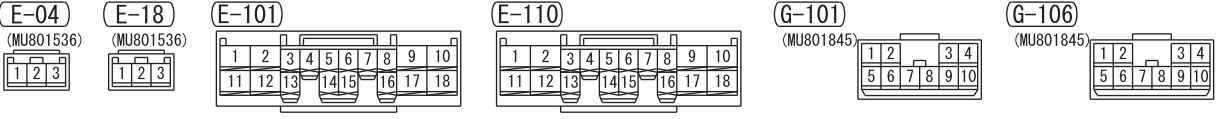


FRONT DOOR SWITCH (PASSENGER'S SIDE) (E-18)

FRONT DOOR SWITCH (DRIVER'S SIDE) (E-04)



NOTE
 *1 : VEHICLES WITH VEHICLE-SPEED SENSITIVE AUTOMATIC DOOR LOCK (WITH IMPACT-SENSITIVE UNLOCK MECHANISM)



Wire colour code
 B : Black LG : Light green G : Green L : Blue W : White Y : Yellow SB : Sky blue BR : Brown
 O : Orange GR : Grey R : Red P : Pink V : Violet PU : Purple SI : Silver BE : Beige